



**EXTERIOR
DOOR
SYSTEMS**



distributed by

**HERITAGE
MILLWORK INC**

who is..... HERITAGE MILLWORK INC

Established in the Spring of 1997 in Ramsey, Minnesota, Heritage Millwork Inc has been servicing the Upper Midwest Market as a two-step distributor of mouldings, millwork, and doors, supplying more than 250 dealers in Minnesota, Wisconsin, South Dakota and Iowa.



Originally stocking only a few interior door designs in two wood species to now over twenty-five door designs in nine species, along with unlimited special-order options. Our large warehouse accommodates bigger volumes eliminating the need to wait for your products. In addition to a wide selection of interior doors, HMI also stocks over thirty moulding profiles in seven species including MDF, with special-order moulding profiles and a full offering of stair parts. Exterior entry door inventories also continue to evolve and expand, including products that promote striking curb appeal and home security as well as product performance including rot resistant materials.

In 2017 Heritage Millwork Inc opened Traditions Finishing Inc (TFI), a new pre-finishing facility, filling a growing desire amongst dealers to have products arrive at the job site finished and ready for

installation. Together, HMI and TFI offer finishing solutions on all product lines in a wide range of colors and finishes, including custom color solutions upon request.

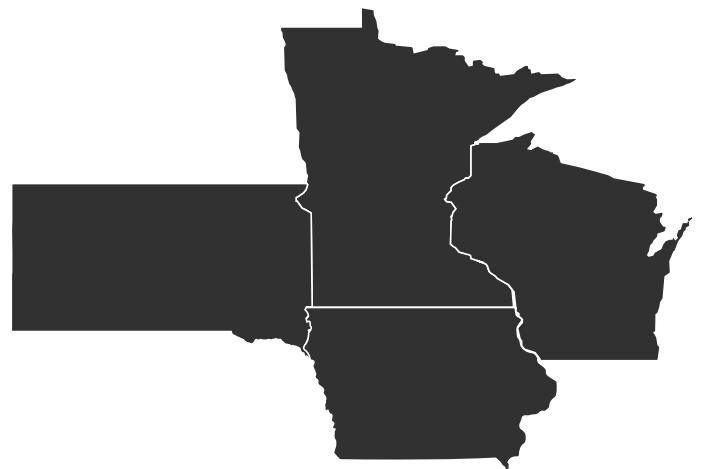
Over the last 25 years HMI has evolved and adapted as market conditions, industry, and customer's needs have changed. The one thing that has remained constant is our commitment to customers, employees, and suppliers. Founded on strong Family values, and still driven by those same principles, our dedicated Team of professionals is committed to exceeding expectations by delivering quality products and service.





Endura Frame Components2-3
 Multi-Point Lock4
 Astragals.....5
 Frontline Frame Options6
 Pre-Finishing7
 Fiberglass Door Collection8 - 11
 HD Steel Door Collection12 - 13
 Heritage Series & Vista Grande Doors14 - 16
 VG Fir Craftsman Doors17
 Blanca Textured Doorglass18 - 19
 Decorative Doorglass20 - 28
 Classic Clear Doorglass29
 Internal Blinds & Vents Doorglass30
 External Muntins Clear Doorglass31
 Internal Muntins Clear Doorglass.....32-33
 Special Order Fypon.....34-35
 Special Order Vista Grande Doors.....36-37
 Special Order ODL Doorglass38-39
 Special Order RSL Doorglass40
 Wood Doors Specifications.....41
 Special Order Wood Doors42-43
 Door Swings44
 Rough Opening/Specifications45

Servicing Minnesota, Wisconsin,
 Eastern South Dakota and Northern Iowa



Heritage Millwork Inc
 6190 McKinley Street NW
 Ramsey, MN 55303
 763-323-7501 (p)
 888-323-7501 (p)

www.heritemillworkinc.com 1

HERITAGECRAFT EXTERIOR DOOR SYSTEMS



Warranted quality and certified performance combine for a door system you can trust.

Certified Powered By Endura® Door Systems from Heritage Millwork are engineered and built to work from the ground up, with components designed and tested to work together for unmatched performance and durability. Every Certified Powered By Endura® System from Heritage Millwork has been strenuously tested and proven to outperform all others, even in imperfect conditions, delivering enhanced value and preventing costly service calls for a system that never stops working for you (or your wallet). But don't just take our word for it. Each system is backed by the industry's strongest lifetime warranty that's stamped right on the door, so you know you're covered by the best.



CERTIFIED POWERED BY ENDURA® TAG.



KEEP THE WEATHER OUT

Force 5 Door Bottoms

The Leading Edge Bulb Design provides a wider, stronger quality seal to keep back air and moisture. With the bulb design, a continuous seal forms along the dam, creating maximum area of surface contact between the door and sill so the door bottom fits securely. The bulb also retains its shape far longer than a fin design, providing long lasting performance.



Endura's door bottoms offer a superior barrier against air and water. The innovative designs and durable materials:

PE650 Weatherstrip



The memory of the weatherstrip is crucial so that when the door is opened, the weatherstrip springs back open and still functions when the door is closed again. Weatherstrip with poor memory will crumble, bend & become ineffective.

Endura's weatherstrip:

- Snaps back into shape when bent or twisted
- PE650 with low wick foam absorbs over 50% less water



The New Simple Solution®z Corner Pad:

Enhanced performance in the real world. With wind or wind-driven rain, air pressure increases on the exterior side of a door system causing water to infiltrate the interior of homes that do not have proper door seals. The Simple Solution® is a compression corner weatherseal with a patented design to seal the door's weatherstripping at the crucial corner preventing water from percolating up and over the threshold.



Z-SERIES SILLS

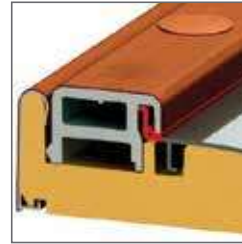


Using a patented design of all-synthetic components, the Z-Series Sill eliminates the worries of wood. Built to last, Z-Series Silles protect your entry from unsightly damage, rusted screws, discoloration, deformity, gaps and dents.



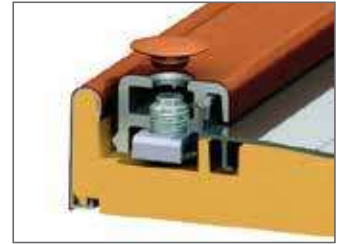
Composite Substrate

No more stuck doors or drafts because the Z-Series Sill substrate material is a waterproof composite that won't warp or rot, ever. The substrate is not affected by moisture and rot like wood.



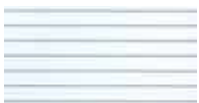
High Dam, Integrated Seal

Innovative cap design overlaps at the dam to provide a barrier against air and moisture, even in extreme weather conditions.



Sealed Adjustment Screws

Sealing plugs hide unsightly screws and keep water and dirt away from the adjustment mechanism, maintaining adjustability of the sill cap over time.



mill finish (standard)



brass



bronze



Look For The FrameSaver® Brand

FrameSaver® brand is stamped right into the product. This ensures builders and homeowners have FrameSaver® protecting the bases of their homes.



FrameSaver® Door Frames from Endura are simply the best door frames on the market. They are so dependable that they come with a **lifetime transferable warranty** that

nobody can match. The patented composite bottom **won't absorb water**, warp, crack or rot and finishes and paints just like wood. FrameSaver's® finger-jointed wood composite protects the base of the frame from moisture exposure, and thus prevents water from wicking into the wood. **Rot never has a chance to begin.** That's Performance Standard.

Z-Series Articulating Cap Sill (special order)



The Z-Articulating Cap Sill™ (Z-AC) is a selfcompensating cost-cutter that reduces the time and expertise needed to install a door unit, preventing performance issues that lead to door unit failure, and eliminating costly service calls, all while outperforming all others. The real world is never perfect, compensate with Z-AC. Heritage Millwork Inc is a certified Z-AC distributor. Special Order Only.

AVOID COSTLY REPAIRS - ROT PROOF



No matter how well a home is built, over time, water and insects will come in contact with exterior door frames, creating rot and the need for costly repairs. While others offer rot resistance, **only Endura FrameSaver®** offers guaranteed rot-proof performance. Simply the best door frame on the market, FrameSaver® even finishes and paints like wood.

US Patents: 6,219,971; 7,350,336; 8,413,383; 8,522,483; 8,991,100; 8,991,101; 9,371,682; 9,428,954; D571,932; D599,490; D722,387; D722,388; and US Patents Pending.
Canadian Patents: 2,771,705; 2,842,214; D153,751; D153,953; D165,013; D165,014 and Canadian Patents Pending.

HARDWARE OPTIONS

TRILENNIUM MULTI-POINT LOCK



The Trilennium® Multi-Point Locking System works long after others fail, delivering strength and performance unmatched by any other system. Backed by the industry's highest ratings for structural and forced-entry performance, Trilennium delivers 3x the strength, 3x the security and 3x performance.

UNMATCHED STRENGTH

Unlike flimsy competitors, Trilennium's one-piece I-Beam lock construction is so strong, it even strengthens the door panel.

RELIABLE SECURITY

Trilennium delivers the strength of 3 full deadbolts for uncompromised protection. No weak hooks or catches. Just tested, proven strength.

EASY, CONSISTENT OPERATION

Better than the competition, Trilennium is easy to use, activating with a single turn of the key or thumb turn, and releasing with just a single

turn of the interior handle.

LASTING, FORGIVING PERFORMANCE

Trilennium corrects misalignment in 3 different directions, even fighting deflection when unlocked for lasting, error-free operation.

ADDITIONAL FEATURES

SmartKey Compatible, quickly rekey the lock while maintain the highest level of security. Lasting Performance, a must have for ensuring lasting performance, particularly for 8' door systems.



TRILENNIUM ENTRY HARDWARE

Designed for the locking system, Trilennium® hardware combines elegant design with precision engineering for beautiful, reliable performance. Stock Color Black, & Victorian Bronze



Eclipse Entry Grip
Black or Victorian Bronze
(stock)



Rectangular
Black or Victorian Bronze
(stock)



Eclipse
Satin Nickel
(stock)



Pinnacle
Victorian Bronze
(special order)



Horizon
Bright Brass
(special order)



Curved
Satin Nickel
(special order)

BALL BEARING HINGE COLORS

Self closing & ball bearing hinges available in select colors.

*Outswing available (outswing hinge colors other than stainless steel are not warranted against corrosion. HMI will not replace any of the below colors besides stainless steel for corrosion).



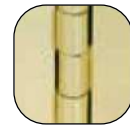
Stainless Steel



Antique Brass



Polished Chrome



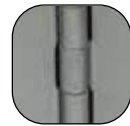
Bright Brass



Flat Black



*Colonial Bronze



Dull Chrome



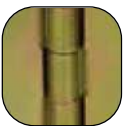
*Satin Nickel



Antique Bronze



*Antique Nickel



*Dull Brass

THE ULTIMATE FRENCH DOOR SOLUTIONS

ULTIMATE FLIP LEVER™ ASTRAGAL

The Ultimate Flip Lever Astragal delivers enhanced accessibility and a patented Flush Bolt and Floating Boot system that eliminates traditional sealing issues, forming a tight seal against the sill cap no matter what.



Flip Lever

With Flip Lever, one flip is all you need to use the inactive door. No more reaching or bending.



Flip Lever Up

With the Flip Lever raised, the astragal boot and bolt are lifted clear of the seal for easy opening and closing of the door.



Flip Lever Down

As the Flip Lever is lowered, the Floating Boot forms a tight seal against the cap, while the Flush Bolt secures the unit in place.

MULTI-POINT ASTRAGAL (MPA)

Stop fearing French doors with the industry-leading Multi-Point Astragal. MPA delivers unmatched sealing power, ease of use and the enhanced performance of a multi-point lock to eliminate leaks, deflection and service calls, and save you valuable time, money and resources. Plus, it works with most standard deadbolts—no additional hardware or extensive machining necessary— meaning significant cost savings for you.



One Flip. Endless Sealing.

Easy-to-use Flip Lever activates astragal boots without reaching or bending.



Multi-Point Sealing Power.

MPA delivers multi-point sealing power without the multi-point price. Three secure sealing points are built right into the astragal, putting an end to deflection and enhancing security, all while working with standard hardware.



FRONTLINE CLADDING & 4EVERFRAME

ALUMINUM CLADDING FOR ENTRY DOORS



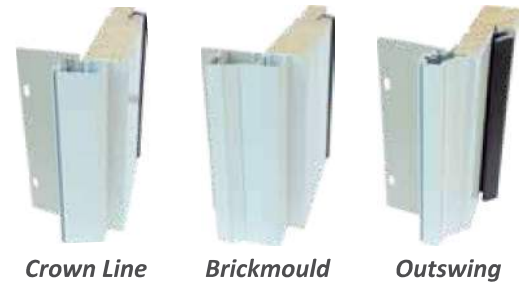
Frontline Sandstone Brickmold Clad

Stock Colors Include: Frontline: White, Almond, Sandstone, Terratone, Bronze, Bahama Brown, Black, and Green.

Special Order Colors Include: Eggshell, Wineberry, Artic Silver and Beige

Cladding Benefits Include

- Eliminate Painting of Frame Trim
- No Maintenance
- No Warping or Water Wicking
- No chipping, no cracing, no peeling
- New or Existing Construction
- Heavy-duty .062 aluminum
- Three Profile Options
- Eight Stock Color Choices
- Four Special Order Color Choices



Crown Line

Brickmould

Outswing

GARAGE DOOR FRAMES - Special Order

- Easy installation - Five minutes to assemble, twenty minutes to install
- Available with 90° square or 45° clipped corners
- .062 (16 gauge) extruded aluminum for strength and durability - with composite insert
- Heavy-duty steel corner gussets for perfectly mitered corners
- No wood in frames means no rot, no water wicking, no warping, and no bug infestation
- Optional 3-1/2" flat casing and J-mould (both field **applied**)
- Compliments the FrontLine entry door cladding system
- Limited Lifetime Warranty



4EVERFRAME COMPOSITE DOOR FRAMES



White Cap

This innovative new product is being stocked in both 4-9/16 and 6-9/16 jamb widths. Choose from either woodgrain or white cap.

The 4Ever Frame's unique formulation combines the strength and stability of wood without the rotting, warping and splitting.

The 4Ever Frame is resistant to mold, mildew, fungus, salt, chemicals, insects, and pollutants, leaving your entryway frame maintenance-free! The 4Ever Frame has the same shape, designs, use, and functionality as wood frames, and can be similarly painted, stained, nailed, and machined.

4Ever Frame Features

- Stocked in White Cap & Woodgrain
- 20 Minute Fire Rating
- Closed Cellular Structure - Will NOT absorb moisture
- Rigid Poly-Fiber Formulation
- No aluminium support channel needed
- Top-Notch Impact and Skin
- Two Times Screw Holding Power - Stronger than wood door frames
- Woodgrain jambs may be painted or stained
- White cap is a great alternative to clad



Raw & Stained Woodgrain



**4Ever Frame Entry Unit
Stained Dark Ruby #19**



Woodgrain

White Cap

PROFESSIONAL PRE-FINISHING

FULL SERVICE PRE-FINISHING

Pre-Finishing your own products can be a long and daunting process. If not done properly you can ruin your doors and other millwork. However, pre-finishing needs to be done on all items in a timely manner, otherwise you can end up voiding the manufacture's warranty.

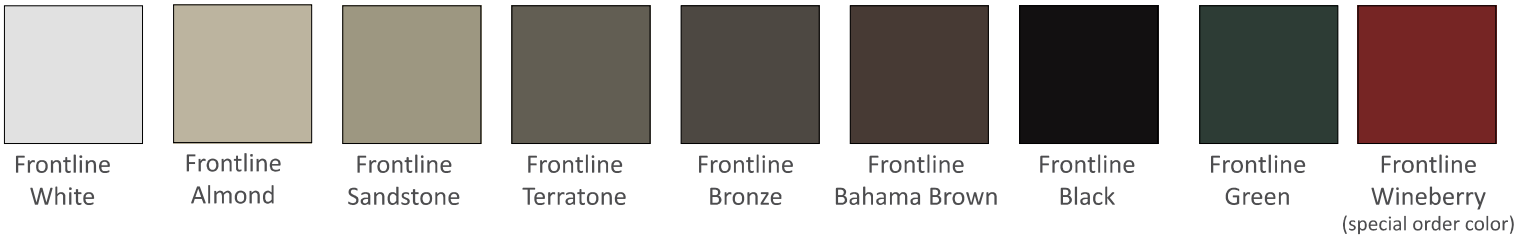
Heritage Millwork Inc, is proud to offer full service pre-finishing in our own state of the art finishing facility. We can finish all of your steel, fiberglass and wood exterior entry doors as well as interior doors, stair parts and millwork.

We offer 24 exterior paint colors and 8 exterior stain colors. Samples are available through one of our many dealers. Custom color matching is also available.

There is an extended lead time for pre-finishing but when your product arrives it will be ready to be installed.



STOCK FRONTLINE CLAD COLORS (MATCHING PAINT AVAILABLE)



8 STAIN COLORS
FOR EXTERIOR
TEXTURED FIBERGLASS DOORS
OR 4EVER FRAME



24 PAINT COLORS
FOR EXTERIOR STEEL OR
SMOOTH FIBERGLASS DOORS



See your local dealer for an actual color sample

FIBERGLASS DOOR COLLECTION

Vista Grande & Heritage Series Premium Fiberglass



VISTA GRANDE

FIR TEXTURED & SMOOTH FIBERGLASS



VGF1L

Fir Textured Fiberglass
(factory glazed glass)



VGS1L

Smooth Fiberglass
(factory glazed glass)



VGF2L

Fir Textured Fiberglass
(factory glazed glass)



VGS2L

Smooth Fiberglass
(factory glazed glass)

HERITAGE SERIES

FIR TEXTURED & SMOOTH FIBERGLASS

In Stock November 2022



HFC300

Fir Texture Fiberglass
(20 minute fire rated)



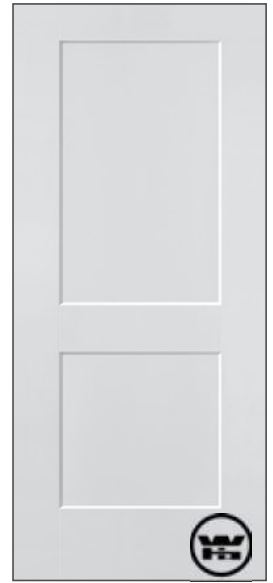
HSC300

Smooth Fiberglass
(20 minute fire rated)



LGF22

Fir Texture Fiberglass
(20 minute fire rated)



LGS22

Smooth Fiberglass
(20 minute fire rated)



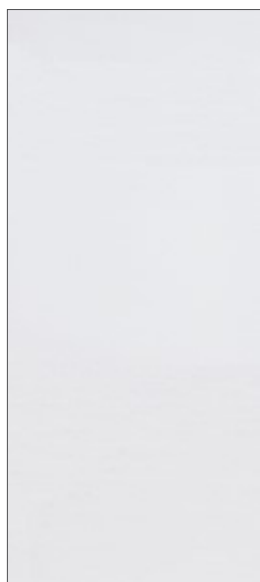
FIBERGLASS DOOR COLLECTION

Belleville Smooth & Textured Fiberglass



BELLEVILLE

SMOOTH FIBERGLASS



BS100

Smooth Fiberglass



BS600

Smooth Fiberglass
(20 minute fire rated)

BELLEVILLE

PREMIUM WOODGRAIN FIBERGLASS



BT100
Oak Textured



BT600
Oak Textured



HERITAGE CRAFT HD STEEL DOOR COLLECTION

Excel Smooth Wood Edge Steel

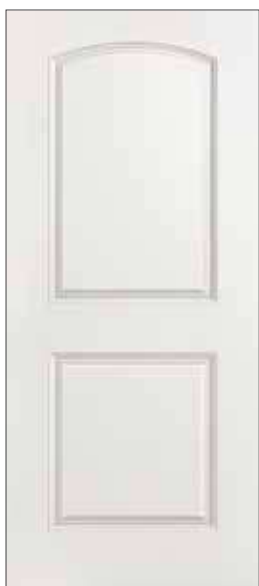


HD STEEL

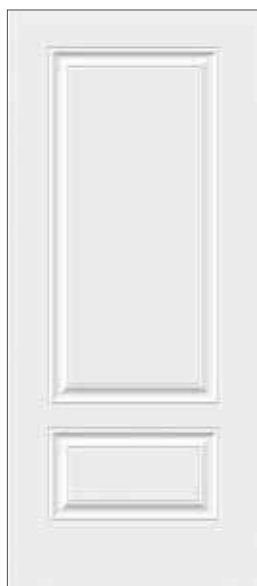
EXCEL SMOOTH WOOD EDGE STEEL



E200



E200C



EW220



EW440



HD STEEL

EXCEL SMOOTH WOOD EDGE STEEL



E600
EW600



E400T



EC300



E100

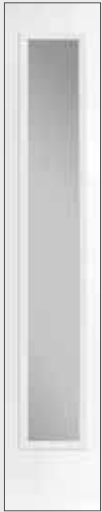


HERITAGE SERIES

smooth fiberglass clear low-e glass



smooth



HS192

clear low-e



HSC1LE

clear low-e



HSC1LE

clear low-e



HSC3LE

clear low-e 3 lite



HSC6LE

clear low-e 6 lite



Optional dentil shelf available for all craftsman entry doors.



Heritage Series Authentic Craftsman Exterior Entry Doors are available with a Fir Texture Woodgrain or Smooth Surface. These flat 3 panel exterior fiberglass doors offer a fantastic curb appeal to your new or existing home.

HERITAGE SERIES

fir textured clear low-e glass



fir textured



HFC1LE
clear low-e 1 lite



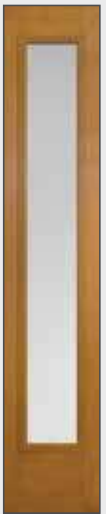
HFC3LE
clear low-e 3 lite



HFC6LE
clear low-e 6 lite



HFC1LE
clear glass



HF192
clear glass



VISTA GRANDE

factory flush-glazed clear low-e glass
fir textured & smooth fiberglass



fir fiberglass



smooth fiberglass



VGf2L
clear low-e



VGS2L
clear low-e



VGf1L
clear low-e



VGS1L
clear low-e



VGf322
clear low-e



VGS322
clear low-e



VGf192
clear low-e



VGS192
clear low-e

VistaGrande® Flush-Glazed doors offer a wider viewing area and cleaner appearance over traditional glass inserts. These doors will bring the natural light into your home. The stile and rail features provide an authentic wood door look.

Glass Size for Stock Doors 2'8" wide doors have a 22x64 glass size, 3'0" wide doors have a 26x64 glass size.



true divided lite

FIR CRAFTSMAN

DuraStyle Exterior Wood Doors



DF2632
Clear Glass
Raised Panel



DF2662
Clear Glass
Raised Panel



DF1761
Clear Glass
Raised Panel

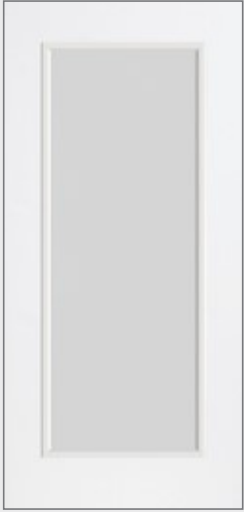


Your new wood door is beautiful. Our job is to help keep it looking just like new. That's why we created AquaSeal™, a proprietary Masonite technology that provides a barrier of pure protection against water, moisture and the elements.

AquaSeal offers 22x more Water Resistance and a 5 Year Warranty.

BLANCA (SATIN)

perspectives textured door glass



186BLC
(E, BS, BT)



227BLC
(E)



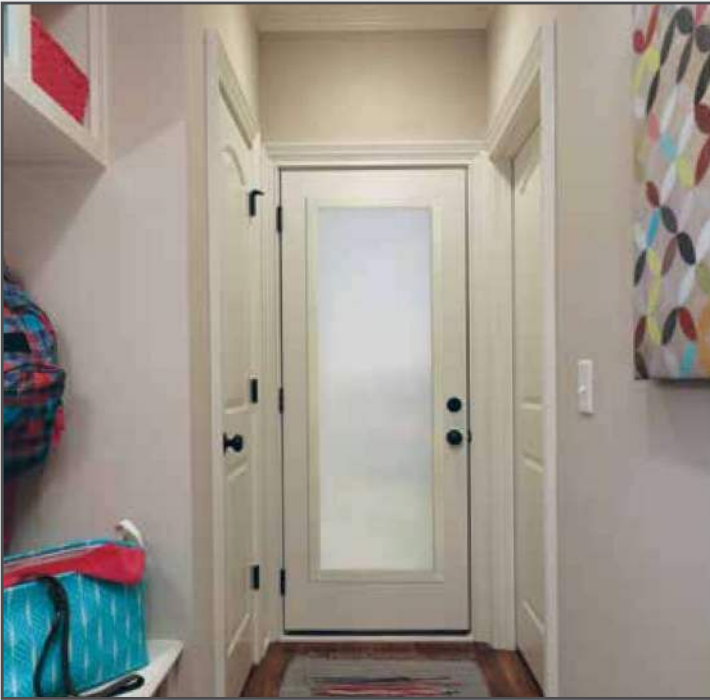
447BLC
(E)



684BLC
(E, BS, BT)



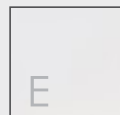
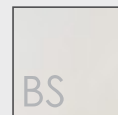
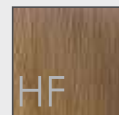
284BLC
(E)



194BLC
(E, BS, BT)



292BLC
(E, BS, BT)





Privacy Rating = 9

BLANCA (SATIN)

perspectives textured door glass



CBLC
(E)

CBLC
(E)



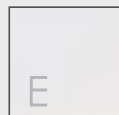
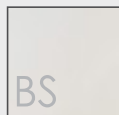
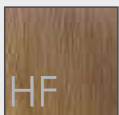
CBLC
(HF, HS)

CBLC
(HF, HS)



CBLC
(HF, HS)

CBLC
(HF, HS)



door key:

E - Excel

EW - Excel White

BS - Belleville Smooth

BT - Belleville Textured Oak

HF - Heritage Fir

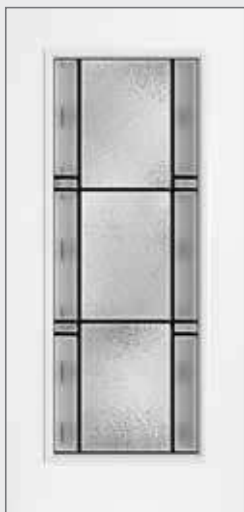
HS - Heritage Smooth

DORIAN

black aluminum caming



Privacy Rating = 8



186DOR
(E, BS, BT)



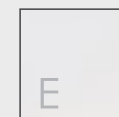
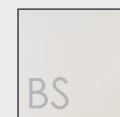
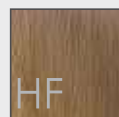
227DOR
(E)



447DOR
(E)



194DOR
(E, BS, BT)





Privacy Rating = 7

ELEMENT

patina coming



ECEL
(E)

CEL
(E)



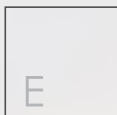
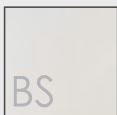
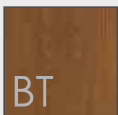
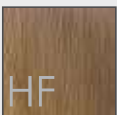
HSCCEL
(HS)

HSCCEL
(HS)



HFCEL
(HF)

HFCEL
(HF)



door key:

E - Excel

EW - Excel White

BS - Belleville Smooth

BT - Belleville Textured Oak

HF - Heritage Fir

HS - Heritage Smooth

GRACE

nickel coming



Privacy Rating = 7



186GRC
(E, BS, BT)



227GRC
(E)



447GRC
(E)



492GRC
(E)



684GRC
(E, BS, BT)



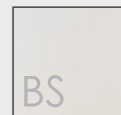
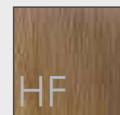
284GRC
(E)



194GRC
(E, BS, BT)



292GRC
(E, BS, BT)

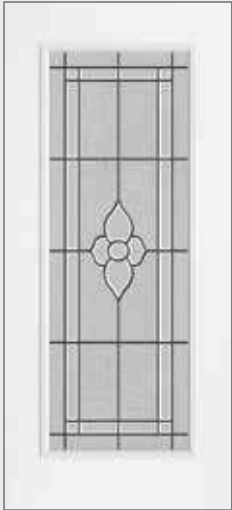


MASTER NOUVEAU

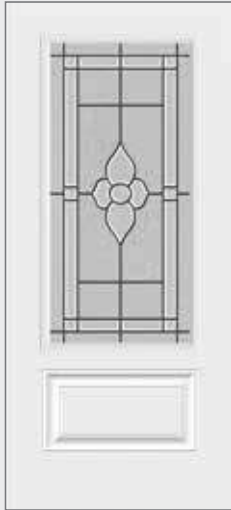
patina caming



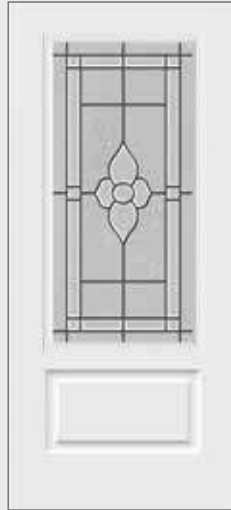
Privacy Rating = 6



186MNP
(E, BS, BT)



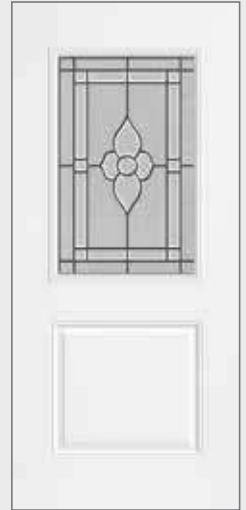
227MNP
(E)



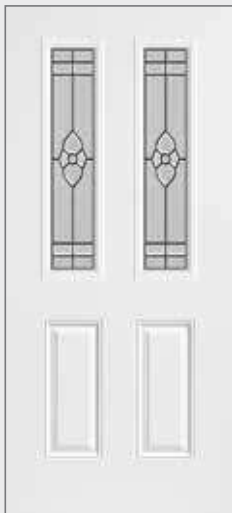
447MNP
(E)



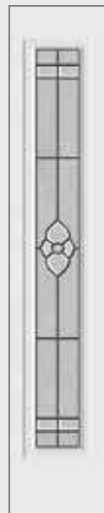
684MNP
(E, BS, BT)



284MNP
(E)



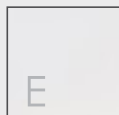
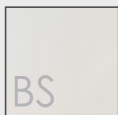
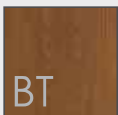
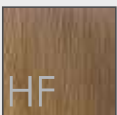
492MNP
(E)



194MNP
(E, BS, BT)



292MNP
(E, BS, BT)



door key:

E - Excel

EW - Excel White

BS - Belleville Smooth

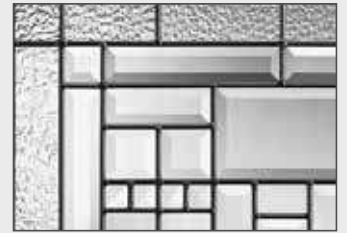
BT - Belleville Textured Oak

HF - Heritage Fir

HS - Heritage Smooth

NAPLES

patina coming



Privacy Rating = 7



ECNA
(E)



HFCNA
(HF)



HSCNA
(HS)



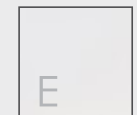
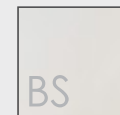
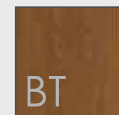
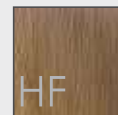
CNA
(E)



HFCNA
(HF)



HSCNA
(HS)

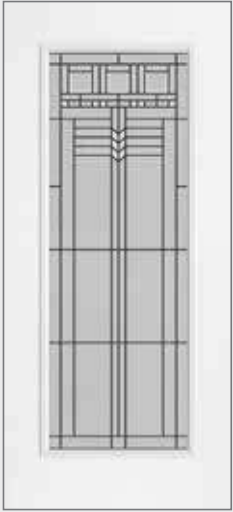




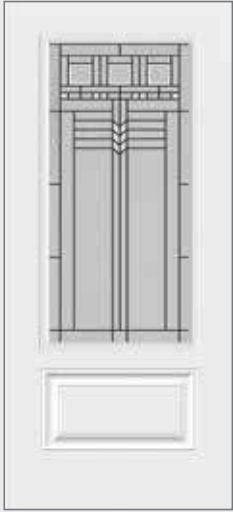
OAK PARK

patina coming

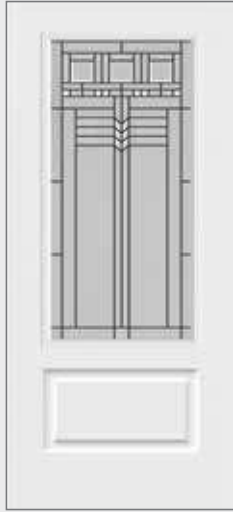
Privacy Rating = 5



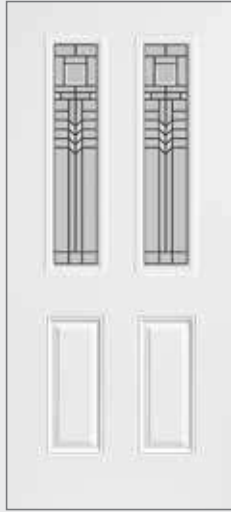
186OP
(E, BS, BT)



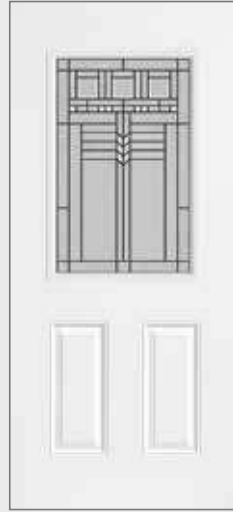
227OP
(E)



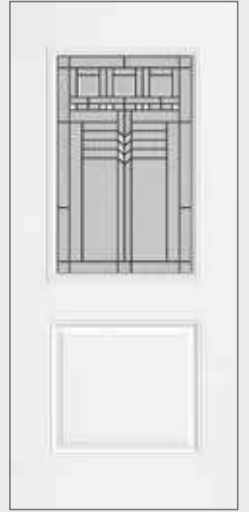
447OP
(E)



492OP
(E)



684OP
(E, BS, BT)



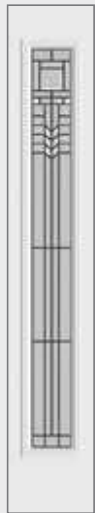
284OP
(E)



COP
(E)



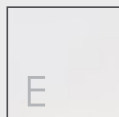
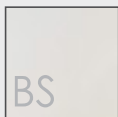
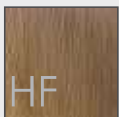
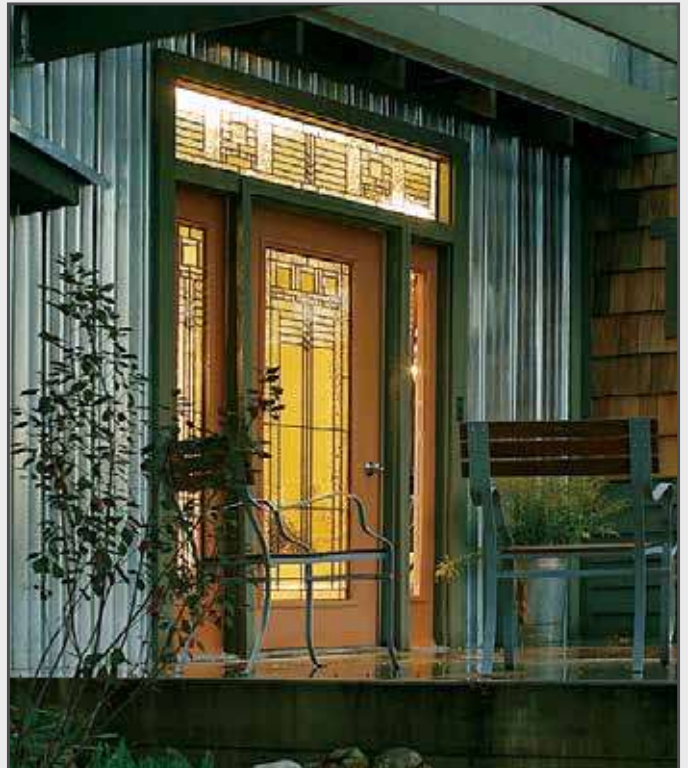
COP
(HF, HS)



194OP
(E, BS, BT)



292OP
(E, BS, BT)



door key:

E - Excel

EW - Excel White

BS - Belleville Smooth

BT - Belleville Textured Oak

HF - Heritage Fir

HS - Heritage Smooth

PARAGON

patina coming



Privacy Rating = 4



186PRG
(E, BS)



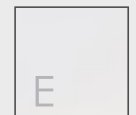
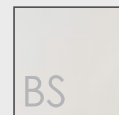
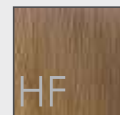
227PRG
(EW)



447PRG
(EW)



194PRG
(E, BS)

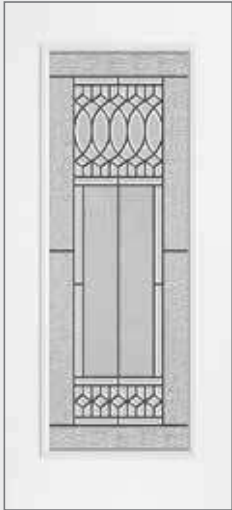




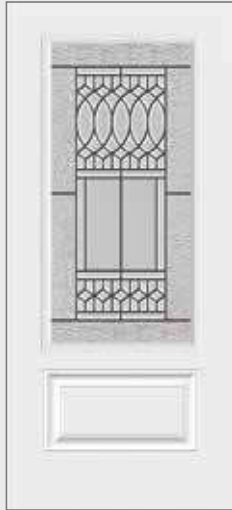
PARIS

patina coming

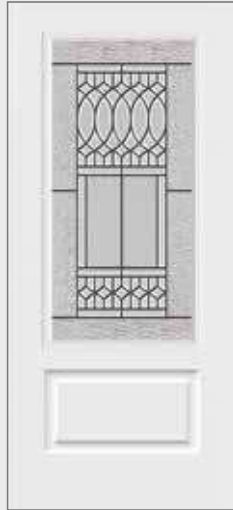
Privacy Rating = 4



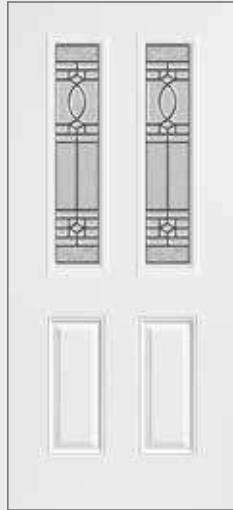
186PS
(E, BS, BT)



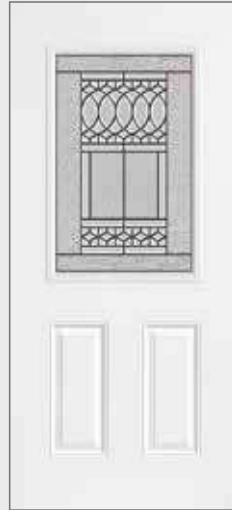
227PS
(E)



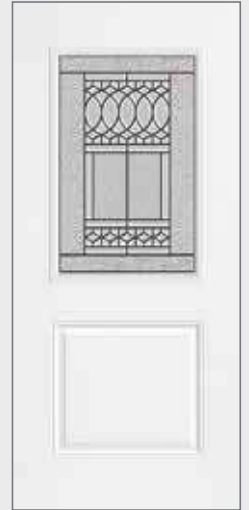
447PS
(E)



492PS
(E)



684PS
(E, BS, BT)



284PS
(E)



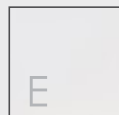
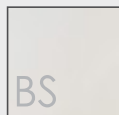
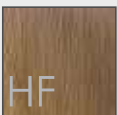
CPS
(E)



194PS
(E, BS, BT)



292PS
(E, BS, BT)



door key:

E - Excel

EW - Excel White

BS - Belleville Smooth

BT - Belleville Textured Oak

HF - Heritage Fir

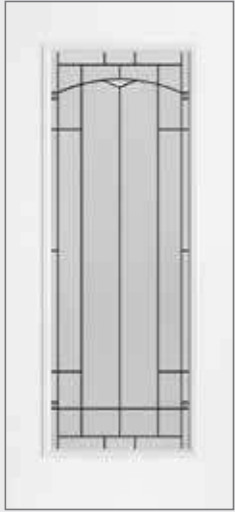
HS - Heritage Smooth

TOPAZ

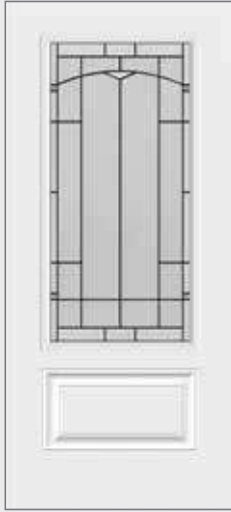
patina coming



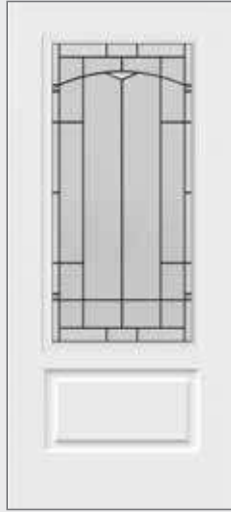
Privacy Rating = 9



186TPZ
(E, BS, BT)



227TPZ
(E)



447TPZ
(E)



492TPZ
(E)



684TPZ
(E, BS, BT)



284TPZ
(E)



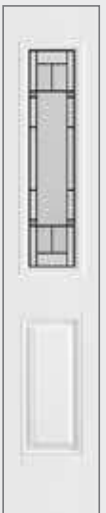
CTPZ
(E)



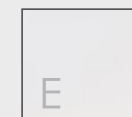
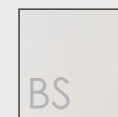
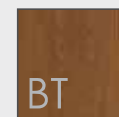
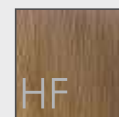
CTPZ
(HF, HS)



194TPZ
(E, BS, BT)



292TPZ
(E, BS, BT)



CLASSIC SERIES

clear insulated glass (I) & clear low-e (L)



186I
(E, BS)



684I
(E, EW, BS)



284I
(E)



492I
(E)



227I
(EW)



447
(EW)

186L
(E, EW, BS, BT)

684L
(E, EW, BS, BT)

284L
(E)

Rain Glass



CRN
(E)



CRN
(HF, HS)



C1LE
(E)



C1LE
(E)



Direct Set
Sidelite



194I
(E, BS)



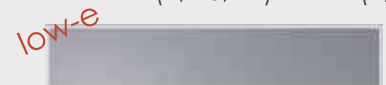
292I
(E, BS)

194L
(E, BS, BT)

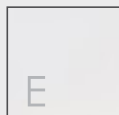
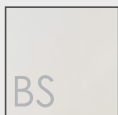
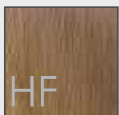
292L
(E, BS, BT)



Direct Set Transom
4012LE or 4214LE
(48" x 12" or 50" x 14")



Direct Set Transom
5012LE or 5414LE
(60" x 12" or 64" x 14")



door key:

E - Excel

EW - Excel White

BS - Belleville Smooth

BT - Belleville Textured Oak

HF - Heritage Fir

HS - Heritage Smooth

INTERNAL BLINDS (IMB)

clear glass - raise, lower & tilt



186IMB
(E, EW, BS)



684IMB
(E, EW, BS)



284IMB
(E)



492IMB
(E)



292IMB
(E, BS)



194IMB
(E, BS)

Pro-Series Vents (IVT)



684IVT
(E, EW, BS)



- Interlocking rails with double seals ensure a tight fit to resist air and water infiltration
- Frames are UV resistant; never needs painting and resists cracking and yellowing
- Screen removable from outside only



284IVT
(E)

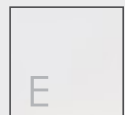
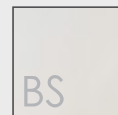
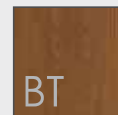
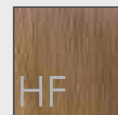
Classic Series clear insulated glass (I)



460I
(E)



680I
(E, EW)



EXTERNAL MUNTINS

clear insulated glass (I) & clear low-e (L)



White (M)



Door: E684IEM White External Muntin, Clear Glass, Finished Wineberry



INTERNAL MUNTINS

clear insulated glass



White (M)



460IIM
(E)



464IIM
(E, EW)



492IIM
(E)



194IIM
(E, BS)



292IIM
(E, BS)



292PIM
(E, BS)



194PIM
(E, BS)



Direct Set Transom
(M)
(48" x 12" or 50" x 14")



Direct Set Transom
(M)
(60" x 12" or 64" x 14")



684IIM
(E, EW, BS)



684PIM
(E, BS)



284IIM
(E)



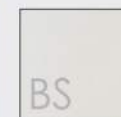
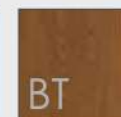
284PIM
(E)



186IIM
(E, BS)



186PIM
(E, BS)

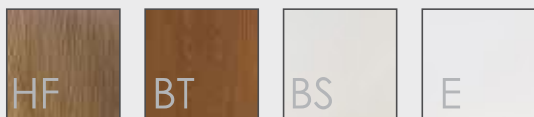
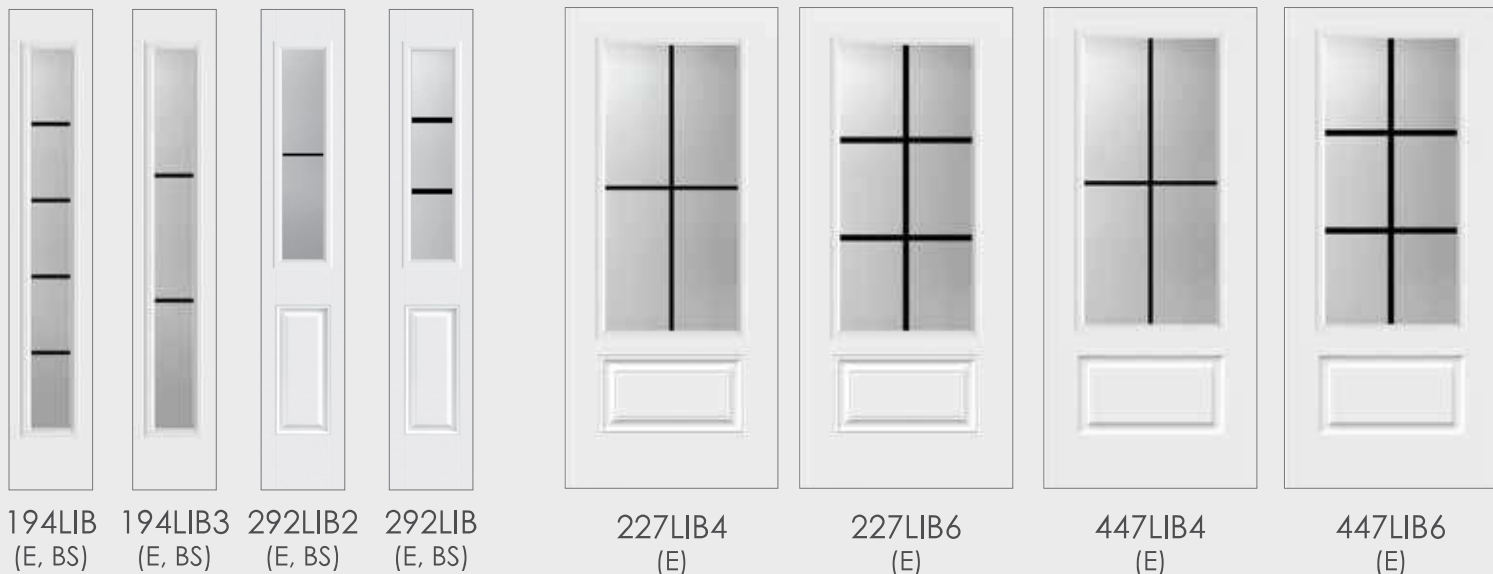




INTERNAL MUNTINS

clear low-e glass

Black (B)



FYPON GABLE PEDIMENTS - SPECIAL ORDER

smooth & wood-grained

Add a charming touch to your home's exterior with Fypon gable pediments. Four woodgrain styles - Burnham, Meier, Sullivan and Asher - provide a clean, simple look that pairs well with any architectural style, including Modern Farmhouse and Craftsman-style homes.

Features & Benefits

- Crafted from durable polyurethane, Fypon gable pediments are lightweight and easy to install.
- They are insect- and moisture-resistant, and won't warp, crack rot or split.
- Smooth and wood-grained options are available to complement any architectural or personal style.
- Come primed and ready to be stained or painted any color to match your home's architectural details.
- Backed by a lifetime limited warranty.



Meier Chamfered



Meier



Asher Chamfered



Burnham Chamfered



Burnham



Sullivan Chamfered



Flat



FYPON - SPECIAL ORDER

Flat-Pack Column Wraps EverCedar & Smooth

Fypon EverCedar wood-grained flat-pack column wraps provide the charming, on-trend aesthetic of real cedar without the hassle. Both the EverCedar & Smooth are both Flat-pack column wrap products and ship unassembled for better handling and utilization of less storage space. Ease of assembly and installation is maintained, without sacrificing performance.



Square

Widths: 6", 8", 10", 12"
Heights: 96", 108", 120"



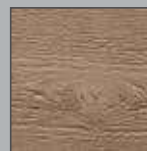
Tapered

Widths: 8" x 12", 11" x 16"
Heights: 48", 54", 60", 66", 72", 96"

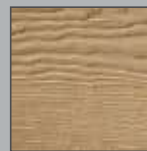


FYPON - SPECIAL ORDER

Wood-Grain Beams & Trusses



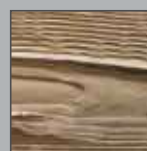
Rough Sawn



Mesa



Hand Hewn



Tahoe

VISTA GRANDE - SPECIAL ORDER

smooth fiberglass, factory flush glazed glass.



VSG-122-S03C-X
VSG-926-S03C-X
clear glass



VSG-122-S15-X
VSG-926-S15-X
clear glass



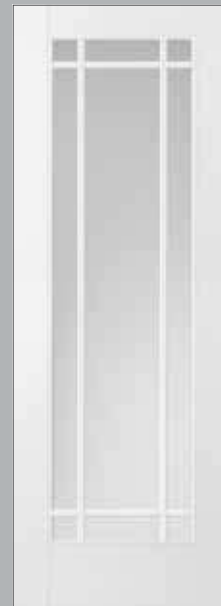
VSG-106-S04C-1
VSG-126-S04C-1
clear glass



VSG-420-S04-1
VSG-426-S04-1
clear glass



VSG-420-S12-1
VSG-426-S12-1
clear glass



VSG-810-S09P-X
clear glass



VSG-122-S04C-1
VSG-926-S04C-1
clear glass



VISTA GRANDE - SPECIAL ORDER

— fir textured fiberglass, factory flush glazed glass



VFT-122-S04C-X
VFT-926-S04C-X
clear glass



VFT-122-S04W-X
VFT-926-S04W-X
clear glass



VFT-106-S04-1
VFT-126-S04-1
clear glass



VFT-404-S03W-1
VFT-426-S03W-1
clear glass



VFT-420-S06-1
VFT-426-S06-1
clear glass



VFT-810-S06W-X
VFT-826-S06W-X
clear glass



VFT-122-S04-1
VFT-926-S04-1
clear glass

ODL SPECIAL ORDER EXTERIOR GLASS

for steel and fiberglass doors

Perspectives Textured Doorglass offers homeowners a diverse collection of privacy glass styles for your entry door. Perspectives doorglass provides privacy and elegance. The glass shown on this page is special order and is available to fit a combination of entry doors. To see all combinations, visit www.odl.com



186 Door
22x64 Vapor Glass



186 Door
22x64 Cumulus Glass



186 Door
22x64 Linen Glass



186 Door
22x64 Streamed Glass



186 Door
22x64 Vapor Glass

GRILLES BETWEEN GLASS



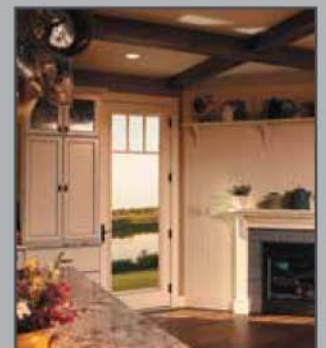
Standard and Wide Grilles offer the broadest range of applications in our Grilles Between Glass products. Equally at home on your entry, side, or patio door; sidelights; and transoms, Standard and Wide Grilles offer a clean look at a price that won't break the bank. These grilles come in six distinct finishes.



BLACK



BRONZE



WHITE

Available Between Clear or Low-E Glass
5/8" Grille (GBG) or 7/8" Grille (GBG78)

Available in White, Black, Tan, Champagne, , Bronze, and Two-Tone Bronze (exterior) / White (interior)

ODL SPECIAL ORDER EXTERIOR GLASS

for steel and fiberglass doors



Exquisitely crafted glass that fits any style or personality. Explore textures, colors and designs.

Below is a sampling of ODL's decorative glass. Additional sizes and designs can be found at www.odl.com.



HSC300 Door
22x17 Ocean Glass



HSC300 Door
22x17 Earth Glass



HSC300 Door
22x17 Dorian Glass



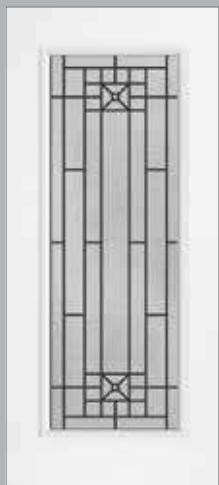
HSC300 Door
22x17 Linen Glass



HSC300 Door
22x17 Monterey Glass



E447 Door
22x48 Courtyard Glass



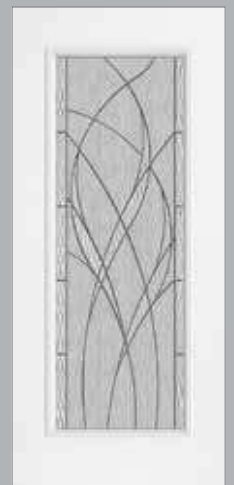
186 Door
22x64 Courtyard Glass



E447 Door
22x48 Bristol Glass



186 Door
22x64 Mohave Glass



186 Door
22x64 Waterside Glass

RSL - SPECIAL ORDER

steel doors with decorative glass

RSL's doorglass is unique in its attention to detail and craftsmanship. Every piece of beveled glass is hand cut and polished with rigorous inspection to ensure our stringent quality by design standards are achieved. The patterns used in assembling our decorative doorglass are made up of handcrafted glass. They are not machine manufactured to be identical and standard in appearance. Our glass is artistic and individually textured with slight bubbles, lines and surface variations. These are natural characteristics of decorative glass and are not defects.



E447 Door
22x48 Avenue Glass



E447 Door
22x48 Placid Glass



E227 Door
22x48 Opal Glass



E227 Door
22x48 Summit Glass



E227 Door
22x48 Summit Glass



186 Door
22x64 Avenue Glass



186 Door
22x64 Placid Glass



186 Door
22x64 Opal Glass



186 Door
22x64 Summit Glass



186 Door
22x64 Summit Glass

Torrefied Wood Doors

UNLIMITED POSSIBILITIES

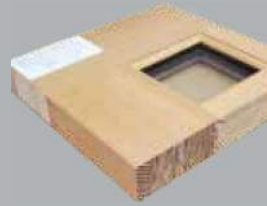
Design the perfect fit for your home with Masonite's Torrefied Collection. These premium exterior wood doors let you have it all without compromise. Our one-of-a-kind, handcrafted, solid wood doors have the highest levels of performance in the market. We're so confident that we back each wood door with a **20-year limited warranty**

without an overhang requirement! Design your perfect door with hundreds of unique panel and glass options. **Torrefied doors will fade if not properly maintained. This is not a defect covered by the warranty.**



AquaSeal™

Over time, exposure to humidity, rain and snow can compromise the beauty and integrity of your wood door.



Masonite's exclusive AquaSeal technology is designed to protect against the damaging effects of moisture, delivering resilience beyond anything you ever thought possible.

When subjected to extreme wind and water, AquaSeal Exterior Wood Doors resisted infiltration 22x better than ordinary wood doors.

5 Year Limited Warranty

AquaSeal Protect Against:

- Warping Cracking
- Delamination Leaking
- Shrinking

Fire Rating

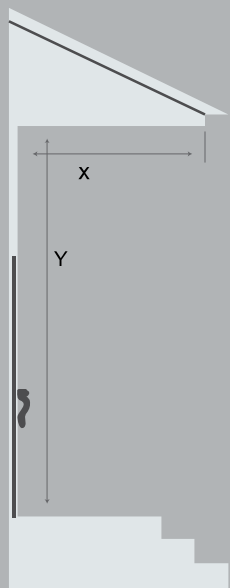
Masonite carries a full line of fire-rated doors and jambs. They range from 20- (negative and positive), 60- and 90-minute/rated models in sizes up to 4/0 width and 8/0 height and are available in a range of custom sizes and designs, with either a primed paint finish or a choice of 15 different species of stain-grade.

Benefit from the advantages of using a single source for all your fire-rated door requirements. It's no longer a choice between form and function because Masonite's fire-rated door products afford your clients the peace of mind they need and the great looks they want.

Overhang Coefficient

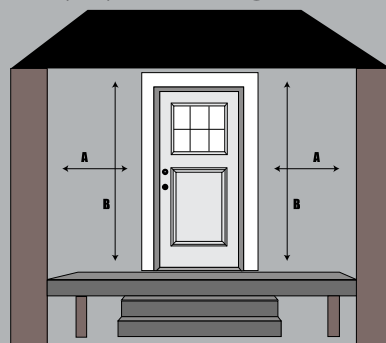
(requirements) Exposure

Standard exterior wood doors must be protected from the elements. Sun, rain, and snow can break down the finish on your door and cause performance issues.



Here are the manufactures requirements for the overhang of a **wood exterior door**. If your door faces North or East, the minimum required overhang (including left and right of the door) is equal to one half the distance from the sill to the overhang. If your door faces South or West, the minimum overhang requirement is equal to the distance from the sill to the overhang. (See illustrations below)

The Torrefied Collection of exterior doors, does not require an overhang. If your location does not allow for the proper overhang for a standard wood door, please select a door from our Torrefied Wood Door Collection.



North or East $X = 1/2$ of Y **South or West** $X = Y$
North or East $A = 1/2$ of B **South or West** $A = B$

ARTISAN WOOD DOOR COLLECTION

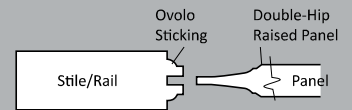
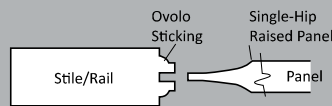
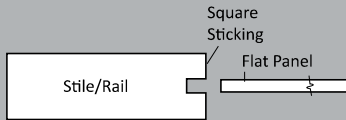
special order extended lead time



PANEL & STICKING SELECTION FOR EXTERIOR WOOD DOORS

Flat panel, raised panel with single or double hip.

These panel configurations are available for *Artisan* and *Le Chateau* Wood Doors.



GLASS SELECTION FOR EXTERIOR WOOD DOORS

Crystal clear or opaque, patterned or plain, the glass you choose should be a reflection of your personal taste. Choose from a wide array of glazing options, making it easy to achieve the look and level of privacy you desire. Many of the designs below are available with beveling, IG and Low-E options. These glass options are available for *Artisan* and *Le Chateau* Wood Doors.



AUSTIN



BAMBOO



CROSS REEDED



DELTA FROST



ENGLISH REEDED



EVERGLADE



FLEMISH



GLUE CHIP



MASTER CARRE



MINSTER



MORISCO



OBSCURED (PEAR)



RAIN



SATIN ETCH



WARWICK



WHITE LAMI

LE CHATEAU WOOD DOOR COLLECTION

special order extended lead time



Panels can be removed and glass added to any design. Hundreds of additional panel designs available.

STILE AND RAIL DOORS DEFINED

- Mullion: Narrow vertical sections between panels
- Muntin: Slim vertical pieces used to separate panes of glass; grill bar
- Panel: Pieces that fit within the surrounding stile & rail frame that come in different profile designs (single hip, double hip, flat)
- Rail: Horizontal pieces of the door; includes top, bottom and sometimes lock rail
- Sticking: The design of the profile edge on the stile and rail; ovolo is carved and rounded; shaker is straight & squared
- Stile: Vertical pieces of the door

WOOD SELECTIONS FOR EXTERIOR DURASTYLE™ WOOD DOORS

From the rich elegance of walnut to the rustic charm of knotty alder, picking a wood species to achieve the look that defines your style. Choose from 8 stain grade species. All species shown below are available for *Artisan* or *Le Chateau* Wood Doors.

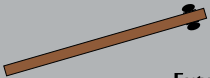


DETERMINING DOOR SWING

steel, fiberglass & wood pre-hungs



Interior

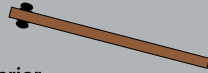


Exterior

Inswing Single Door
Left Hand



Interior



Exterior

Inswing Single Door
Right Hand



Interior

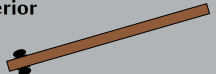


Exterior

Outswing Single Door
Right Hand



Interior

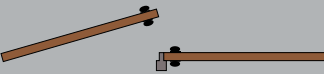


Exterior

Outswing Single Door
Left Hand



Interior

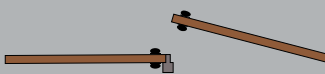


Exterior

Inswing Double Door
Left Hand Active
Astragal installed on
Right Hand Door



Interior

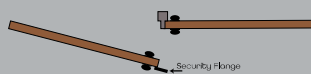


Exterior

Inswing Double Door
Right Hand Active
Astragal installed on
Left Hand Door



Interior

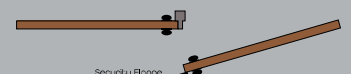


Exterior

Outswing Double Door
Right Hand Active
Astragal installed on
Left Hand Door



Interior



Exterior

Outswing Double Door
Left Hand Active
Astragal installed on
Right Hand Door

ROUGH OPENINGS

steel, fiberglass & wood pre-hungs

Heritage Standard Machining Specs Steel, Fiberglass & Wood Doors

All measurements shown are from the top of the door to the top of the hinge and the top of the door to the center of bore.

3-0 & 3-6 steel & fiberglass doors are bored 2-3/4" backset.

2-6 & 2-8 steel & fiberglass doors are bored 2-3/8" backset.

All widths of Stile and Rail Wood doors are bored 2-3/8" backset

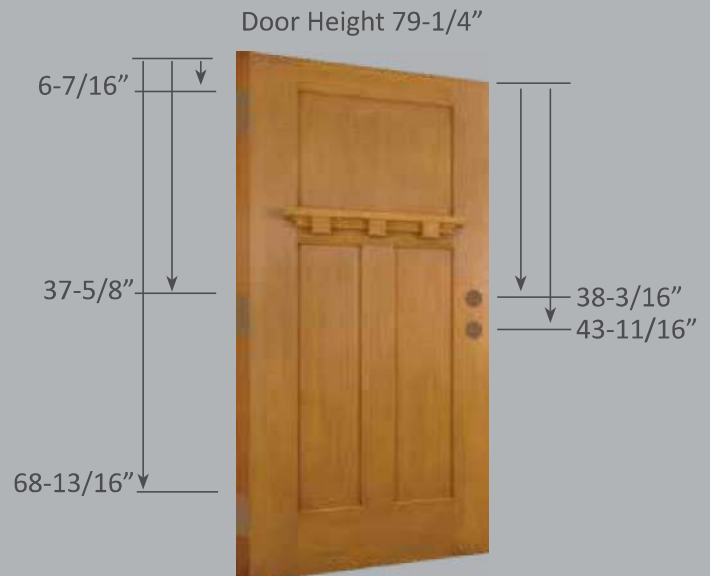
All doors have a 2-1/8" diameter face bore, and a 1" x 2-1/4" mortise edge prep (ANS 9206), unless specified otherwise.

Steel & fiberglass doors are machined for a 4" x 4" butt hinge.

Wood stile and rail doors are machined for a 4"x 4" radius radius hinge.

Exterior Wood slab only doors are shipped are full and square.

Steel and Fiberglass slabs are 1/4" undersized in width



Steel, Fiberglass & Wood Prehung Rough Openings - With standard continuous head and sill on all mull units

Door Width	Single Door	W/One 1-0 SL	W/Two 1-0 SL	W/One 1-2 SL	W/Two 1-2 SL	Double Door
2'-6"	32-1/2"	46"	59-1/2"	48"	63-1/2"	63"
2'-8"	34-1/2"	48"	61-1/2"	50"	65-1/2"	67"
3'-0"	38-1/2"	52"	65-1/2"	54"	69-1/2"	75"
3'-6"	44-1/2"	58"	71-1/2"	60"	75-1/2"	87"

6-8" door (inswing) = 82-1/2" Rough opening height

6-8" door (outswing) = 81-5/8" Rough opening height

6-8" door (low-profile) = 81-1/2" Rough opening height

6-8" door & 12" rect transom (stock sizes) = 96" Rough opening height (inswing)

6-8" door & 14" rect transom (stock sizes) = 98" Rough opening height (inswing)

Outside of frame width (no brickmould) = subtract - 1" from rough opening

Outside of frame height (no brickmould) = subtract - 1/2" from rough opening

Outside of brickmould width = add+ 1-1/2" to rough opening

Outside of brickmould height = add+ 3/4" to rough opening

For Brickmould Clad outside of brickmould width = add+ 1-1/2" to rough opening

For Brickmould Clad outside of brickmould height = add+ 1/2" to rough opening

For outside of crownline clad width = add+ 1/8" to rough opening

For outside of crownline clad height = add+ 1/16 to rough opening

Masonry Opening for OUTSWING Clad width = Standard R.O. (listed in chart above) + 1/4"

Masonry Opening for OUTSWING Clad height = 81-5/8"

Note: We reserve the right to make changes in specifications, construction, design and details at any time.

Corrections to reflect such changes will be included in subsequent printings of this publication.



*“The Doors of Opportunity
Swing On The Hinges
of Opposition!”*

–Adrian Rogers

