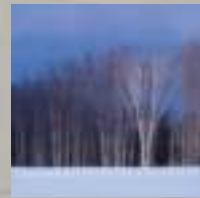


AJ Manufacturing//**commercial**//5100 & 7100



**steel** walk doors



# commercial 5100 & 7100

steel walk doors with steel jambs prehung and 4-way universal



**9-Lite Crossback**



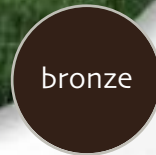
**Full View**



**9-Lite**



white



bronze



brown



clay

## Style and Strength

- Rolled edge door panel of 24-gauge polyester painted galvanized steel creates a smooth look that will complement your building
- Rolled steel edges wrap around heavy internal aluminum (5100 Series) stiles and rails that bond with the polyurethane foam to create a seamless rigid panel
- Heavy-duty 16-gauge 3 1/2" wide painted steel jambs
- 12-gauge stainless steel 4-1/2" x 4" fixed pin hinges for durability and security

## Protection Against the Elements

- High-performance replaceable bulb and leaf weatherseal of extruded Santoprene® remains flexible in all temperature extremes
- Aluminum parting stop in header frame enhances weather protection
- Bulb and wand Alcryn® sweep gives greater weather resistance over ordinary PVC sweeps
- R-12 insulation value from a panel of injected polyurethane foam (2.2 pounds per cubic foot) protects against external temperatures

## Distinctive Details

- 4-way universal swing prevents problems with last-minute jobsite changes
- Low-profile ADA-approved aluminum sill
- Factory prepped with aluminum reinforcing blocks at lock, deadbolt, panic hardware and closer locations to allow for flexibility during installation
- 2-3/4" backset with a 2-1/8" diameter lock bore hole

## Options to Fit Your Needs

- Sizes from 2'0" to 4'0" wide and 6'8" and 7'0" high available
- Single-glazed and insulated tempered door lites
- Grids available on insulated 9-Lite and Full View Lites
- Crossback and 6-panel pattern on both interior and exterior

# 7100 thermally broken door

when the demands of nature require higher performance



6-Panel

Vue Lite

Vent-Lite

Standard

## Thermal Barrier to Reduce Wintertime Heat Loss, Summertime Heat Gain and the Risk of Interior Condensation

- Polypropylene thermal break in the 16-gauge steel jambs
- Reblocks of high density molded urethane at the lock bore, deadbolt, closer and panic hardware prep locations
- Pultruded fiberglass stiles and rails create a thermal break on the rollformed panel

## Pultruded Fiberglass

*Giving Superior Structure and Low Thermal Conductivity*

Pultruded fiberglass ensures that your door will hold up to the weather extremes that Mother Nature emits. This high-performance material is corrosion resistant and electrically insulative.

## Pultruded Fiberglass in 7100

The pultrusion process uses thousands of glass fibers and a fiber mat, which are put in a liquid resin bath. They are then pulled through a heated shaping die, producing a structurally solid part.



**AJ Manufacturing, Inc**  
[www.ajdoor.com](http://www.ajdoor.com)

### Door Construction

24-gauge hot-dipped galvanized smooth steel panels	■	■
Flush design—rolled edges for style, strength and corrosion resistance	■	■
1-3/4" thick door pressure injected with 2.2 pounds of polyurethane foam per cubic foot	■	■
Door is mounted to frame jamb by three 12-gauge stainless steel, 4-1/2" x 4" fixed pin hinges	■	■
Door panel is strengthened with extruded aluminum reinforcing block at locations for entry lock, dead bolt, panic hardware and closer	■	
Door panel is strengthened with high density molded urethane reinforcing block at locations for entry lock, dead bolt, panic hardware and closer		■
High strength internal fiberglass reinforced pultruded stiles and rails for thermal break		■
Exposed surface of stiles coated with color matched paint	■	■

### Weather Stripping

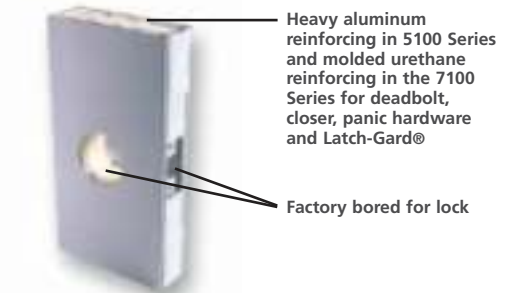
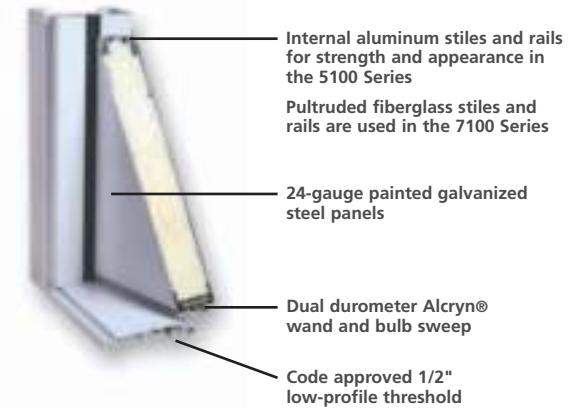
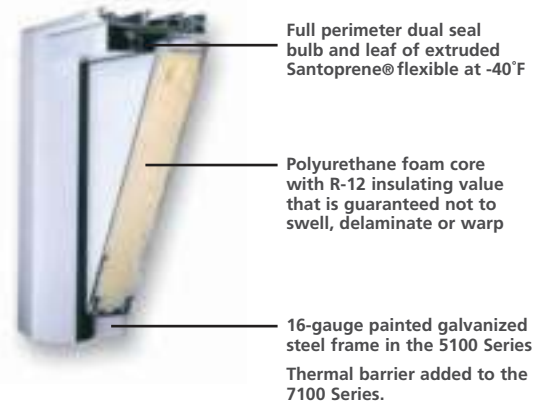
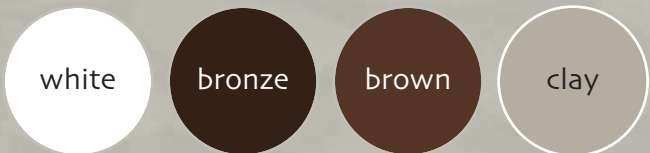
Master frame and header are weather stripped with a dual seal bulb and leaf of extruded Santoprene®	■	■
Sill sweep is a dual durometer Alcryl® consisting of two flexible wands and a center bulb with a rigid base	■	■

### Panel Options

Standard panel, no lite	■	■
6-panel, no lite	■	■
22" x 22" Vue Lite insulated or single-glazed tempered glass	■	■
22" x 36" One Lite insulated tempered glass—Crossbuck and plain panels available	■	■
22" x 36" 9-Lite insulated tempered glass with a rigid aluminum grid system installed within the 1/2" dead air space—Crossbuck and plain panels available	■	■
22" x 36" Vent-Lite available in crossbuck or plain panels	■	■
22" x 64" Fullview sealed insulated glass consisting of two pieces of 1/8" tempered glass with 1/2" dead air space	■	■

### Colors

White, bronze, brown, and clay are standard. Contact Customer Service for availability by model and size.



AJ Manufacturing, Inc  
1217 Oak Street  
Bloomer, WI 54724  
800.328.9448 • 715.568.2204  
www.ajdoor.com